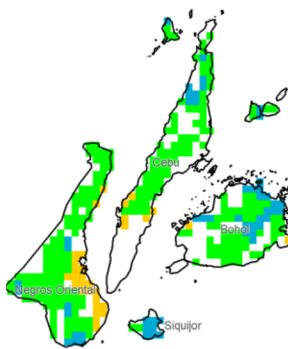
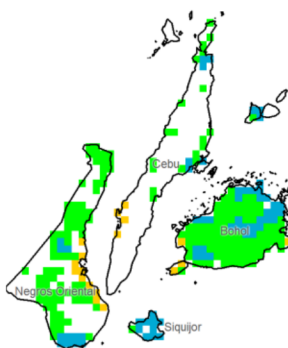


Region VII (Central Visayas)

Water Availability for Rice
Prevailing Stage : (IV) Ripening



Water Availability for Corn
Prevailing Stage : (IV) Maturity



Provincial Values

	Mon. Ave. Rainfall (mm)	Rice		Corn	
		CS	CCI (%)	CS	CCI (%)
Bohol	196.7	I	124.9	I	206.3
		II	118.0	II	162.4
		III	114.8	III	137.5
		IV	156.5	IV	161.2
Cebu	222.6	I	101.3	I	224.0
		II	93.1	II	157.0
		III	89.4	III	122.7
		IV	142.8	IV	155.2
Negros Oriental	153.2	I	80.6	I	157.9
		II	74.3	II	116.2
		III	71.5	III	93.9
		IV	110.7	IV	115.0
Siquijor	199.6	I	345.1	I	447.3
		II	342.8	II	434.5
		III	341.7	III	425.9
		IV	355.0	IV	434.1

Crop Stage (CS) highlighted in black is the dominant stage during the month of August.

Rice CS: (I) Nursery (II) Vegetative (III) Reproductive (IV) Ripening
Corn CS: (I) Establishment (II) Vegetative (III) Reproductive (IV) Maturity
CCI Category: Inadequate (Yellow), Sufficient (Green), Excess (Blue)

Regional Summary

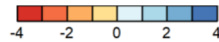
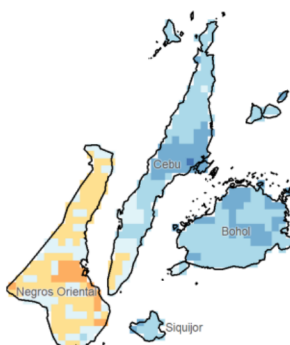
The rainfall received for the month was sufficient for the following: the rice crops at any crop stage and corn crops at the prevailing ripening stage in Bohol, Cebu, and Negros Oriental. Meanwhile the rainfall for the month was excessive in Siquijor province which could have caused damage on both rice and corn crops at any of the crop stages.

The SPIE3 indicates slightly wetter to significantly wetter than normal conditions in some parts of the region (i.e., central portion of Cebu) except in Negros Oriental where generally near normal conditions to slightly dryer condition were experienced in the past three months. Rx1day and Rx5day indicates that there was no significant extreme rainfall event that may have influenced the region.

NDVI

NDVI satellite data not yet available.

SPIE3 (Jun-Jul-Aug)



RX1day



RX5day

